

1. Air quantity control

To set the air to material ratio, adjust the stepless air micrometer by hexagon socket screw key.

2. Exchange of nozzle set

When changing to another nozzle size, make sure that the complete nozzle set is exchanged. A set comprises of air cap, Paint needle and paint nozzle. Insert paint nozzle before putting in paint needle.

3. Exchange of the self tensioning sealings

The needle seal is effected by a Teflon seal and a needle packing with self-tensioning compression Spring. To change the packing Please use the socket Spanner Provided.

4. Cleaning and Gun care

- A) Flush gun thoroughly with solvent
- B) Clean air nozzle with brush. Do not plate the gun into solvent.
Clogged holes should never be cleaned with improper objects, at the smallest amount of damage may badly influencen the spray pattern.
- C) may badly influencen the spray pattern.
- D) Slightly oil movable parts.

Trouble

- 1. Gun leaks from fluid nozzle.
- 2. Paint emerges from fluid needle-needle sealing.
- 3. Spray pattern in sickle shape.
- 4. Drop-like or oval shaped pattern.
- 5. Paint spray flutters.
- 6. Material babbies or "boils" in paint cup.

Cause

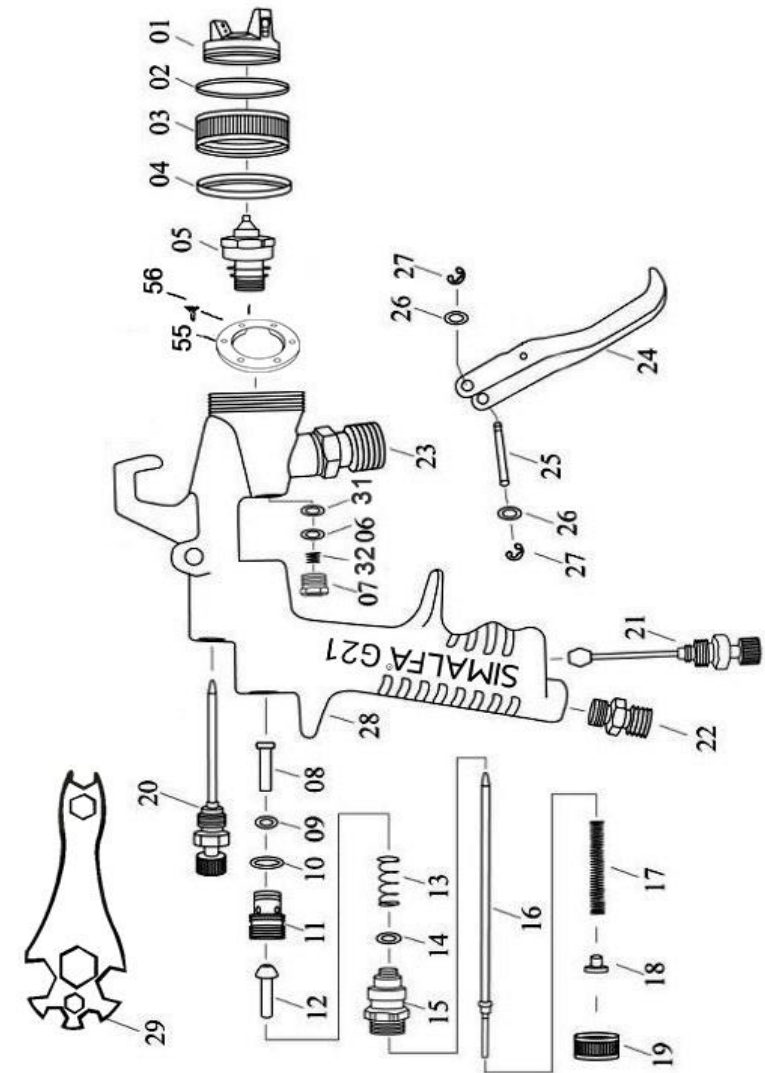
- 1. Foreign substances between fluid nozzle and fluid needle prevent sealing.
- 2. Self tensioning needle sealing damaged or lost.
- 3. Horn air holes or air circuit clogged
- 4. Dirt on fluid needle tip or air outlet.
- 5. Too little material in cup, fluid nozzle not tight, needle sealing damaged, nozzle set dirty or damaged.
- 6. Atomization air flows through the paint channel to the cup. The paint nozzle is not tight enough. Air nozzle is not completely screwed, the air net clogged and the seat is defective or nozzle insert is damaged.

Repair

- 1. Clean fluid needle and fluid nozzle in thinner or use new fluid nozzle.
- 2. Replace needle sealing.
- 3. Soak in thinner, after wards clean with nozzle-cleaning needle.
- 4. Turn air nozzle by 180 degrees. If defective pattern remains, clean paint outlet in air nozzle.
- 5. Refill material, tighten parts, if necessary clean or replace parts.
- 6. Tighten parts accordingly, clean or replace.

SIMALFA®

Model G21 AIR SPRAY GUN, PRESSURE FEED, HVLP



SIMALFA®

Model G21 AIR SPRAY GUN, PRESSURE FEED, HVLP

Pos.	ALFA No.	DESCRIPTION	Pos.	ALFA No.	DESCRIPTION
1-4	54183	Air Cap Set 0.8 mm	29	54215	Spanner
1-4	54185	Air Cap Set 1.2 mm	31	54216	Washer
1-4	54186	Air Cap Set 2.0 mm	32	54217	Spring
5	54187	Fluid Nozzle 0.8 mm	55	55017	POM Air Distribution Ring
5	54188	Fluid Nozzle 1.2 mm	56	55018	S.ST. Screw (M2 x 3)
5	54189	Fluid Nozzle 2.0 mm			
6	54190	Needle Packing Teflon			
7	54191	Needle Packing Nut			
8	54192	Air Valve Shaft			
9	54193	O-Ring (9 x 1)			
10	54194	O-Ring (10.6 x 1.65)			
11	54195	Brass Air Valve Body Set			
12	54196	Air Valve			
13	54197	Spring For Valve			
14	54198	O-Ring (8 x 1.5)			
15	54199	Fluid Needle Guide			
16	54200	Fluid Needle 0.8 mm			
16	54201	Fluid Needle 1.2 mm			
16	54202	Fluid Needle 2.0 mm			
17	54203	Fluid Needle Spring			
18	54204	Plastic Packing			
19	54205	Fluid Adjustment Knob			
20	54992	Pattern Adjustment Valve Set Plus			
21	54207	Air Adjusting Valve Set Plus			
22	54208	Air Hose Joint			
23	54209	Fluid Nipple (S.ST.)			
24	54993	Trigger (S.ST.)			
25	54211	Trigger Pin			
26	54994	Washer [2] (S.ST.)			
27	54213	Locking Ring [2]			
28	N/A	Gun Body			

Declaration of Conformity

ALFA Klebstoffe AG / ALFA Adhesives Inc. declares under our sole responsibility that the product to which this declaration relates is in conformity with the requirements of **New Machinery Directive of 2006** on the approximation of the laws of the Member States relating to machinery.
(2006/42EC, EN 792, EN ISO 12100)

Model: G21

Machine Name: AIR SPRAY GUN, PRESSURE FEED, HVLP

Place, Date of issue

ALFA Klebstoffe AG, Vor Eiche 10, CH-8197 Rafz , Switzerland, 2011.11.25
ALFA Adhesives Inc., 15 Lincoln Street, 07506 Hawthorne, N.J., USA, 2011.11.25



Thomas Simmler, CEO
Signature of issuer



Model G21

AIR SPRAY GUN, PRESSURE FEED, HVLP

Standard Fluid Tip Size (mm) : 1.0

Optional Nozzle Size (mm) : 0.8, 1.2, 2.0

Air Cap Pressure : < 10 psi

Air Pressure : 29 psi (2 bar)

Air Consumption : 226.4 l/min

Air Inlet : 1/4" Fluid Inlet : 3/8"

Gun Weight : 0.48 kg

OPERATION

1. Starting

- a 、 Use spanner to tighten the nozzle
- b 、 Check for correct tightening of stuffing box to avoid any air leakage.
- c 、 Air hose should be blow out before fitting with the air connection.
- d 、 Before using this gun, please make sure that it is carefully bushed w/solvent.

2. Adjustment of the Jet width

To adjust jet width, rotate the stepless adjuster.

The spray pattern can be altered from flat to round spray as required.