

Optional Items

265022230G(01)



Air Compressor



Fume Extractor



Rotary Attachment

LaserPro E200

| | |
|-------------------------------------|--|
| Work Area | 20 x 12.9in. (510 x 330mm) |
| Maximum Part Size (WxLxH) | 20.4 x 13.4 x 0.78in.(520 x 340 x 20 mm) (with grid cutting table) 19.8 x 13.4 x 2.99in.(505 x 340 x 76 mm) (remove grid cutting table) |
| CCD Camera | Standard, accurate within 0.16in (4mm) |
| Working Table | Standard grid cutting table |
| Dimensions | 36 x 30.7 x 11.8 in. (915 x 780 x 300mm) |
| Laser Wattage | DC driven glass laser tube: 40W |
| Laser Source | Sealed CO ₂ laser |
| Drive | Closed-loop DC Servo Control |
| Maximum Working Speed | 20 IPS |
| Maximum Cutting Thickness | 10mm |
| Speed Control | Adjustable from 0.1~100% (Up to 5 color-linked speed settings per job) |
| Power Control | Adjustable from 0~100% (Up to 5 color-linked power settings per job) |
| DPI | Available 250,380,500,760,1000 |
| Focus Lens | Standard 1.5" |
| Computer Interface | Full-speed USB 2.0 port, 10 Base-T Ethernet |
| Compatible Operating Systems | MS Windows |
| Control Panel | 7" touch screen |
| Connection | WiFi, Ethernet, USB |
| Water Chiller | Standard |
| Safety | Class I Laser Product Complies with EN60825-1 Class II Laser Product Complies with CDRH |
| Facility Requirements | |
| Electrical | 100-240VAC, 50-60Hz Auto Switching, Max. 15A |
| Air Exhaust System | External exhaust system with minimum flow rate 300 m ³ /h (10594 ft ³ /min) is required, 2,500PA negative pressure (PURE-AIR PA-300 @ 4" exhaust port) |

* Above specifications are subject to change without prior notice.



www.GCCworld.com



GCC Headquarters 4F-1., No.236, Fude 2nd Rd., Xizhi Dist., New Taipei City 22151, Taiwan 886-2-6616-6692 Fax: 886-2-2694-6875
 GCC China No.1, Chen Feng Road, Yushan, Kunshan, Jiangsu 215300, China 86-512-5726-1515 Fax: 86-512-5726-1518
 GCC Europe B.V. Eglantierbaan 43-45, 2908 LV, Capelle a/d IJssel, The Netherlands 31-10-458-9367
 GCC America, Inc 20453 E Valley Blvd. Walnut, CA 91789, USA 1-909-718-0248 Fax: 1-909-718-0251
 US & Canada Only Toll Free: 1-888-284-5211

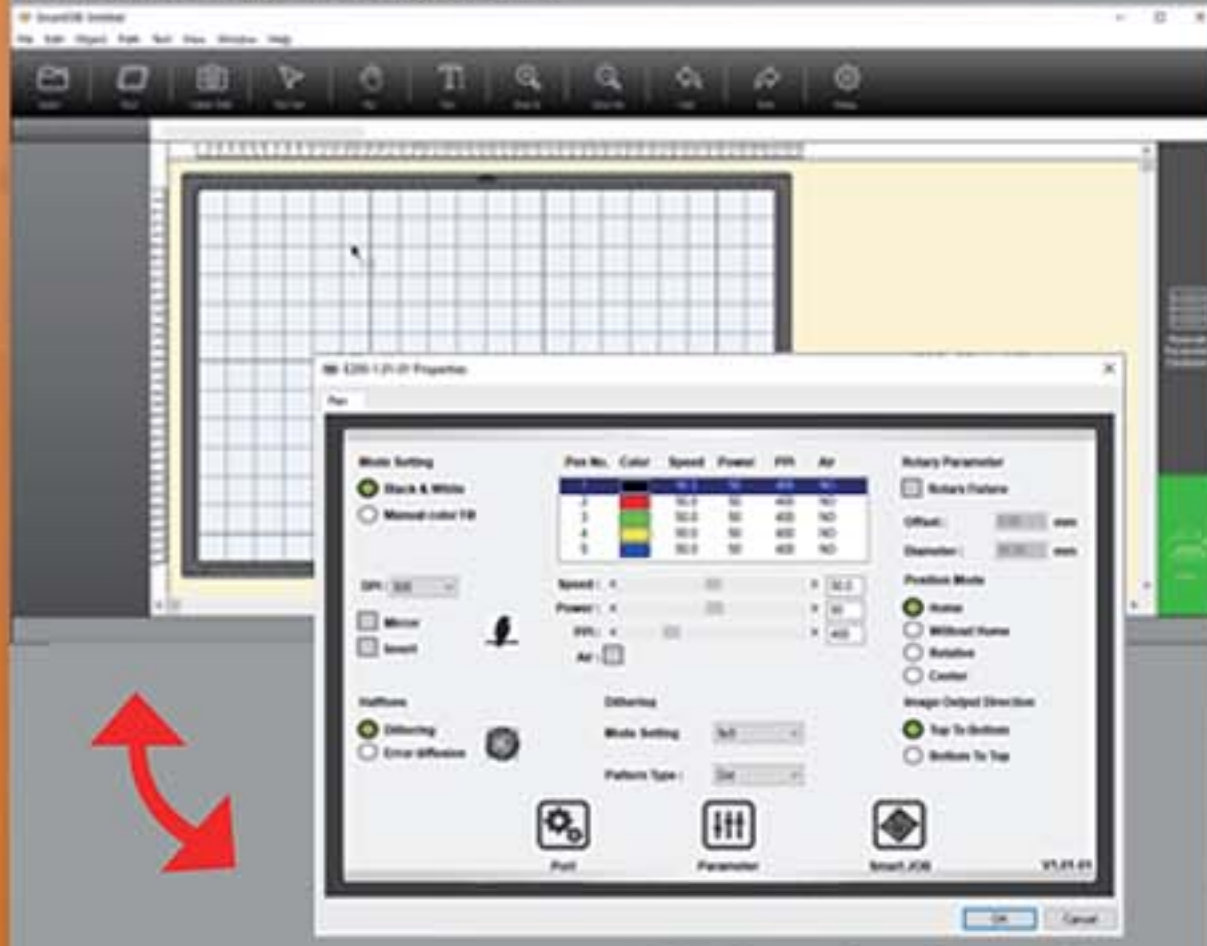
GCC E200 Desktop Laser Engraver So Simple, So Professional



E200

- 510 x 330mm Desktop Laser Engraver
- 7" Touch Screen Control Panel
- CCD Camera
- Live Camera Preview
- Multifunction user interface for both beginners and advance users
- 20ips High Speed throughput
- Standard Water Chiller for high production
- Stamp mode with shoulder level function

SmartJOB app for beginners.



GCC driver for advanced users.

Simple but Professional

Multifunction user interface for both beginners and advance users.



Standard Water Chiller for Long-time Working

E200 desktop laser engraver comes with a standard water chiller to ensure machine efficiency.



Unmatchable Output Quality

GCC E200 takes your engraving and cutting to a level beyond other desktop laser engravers.



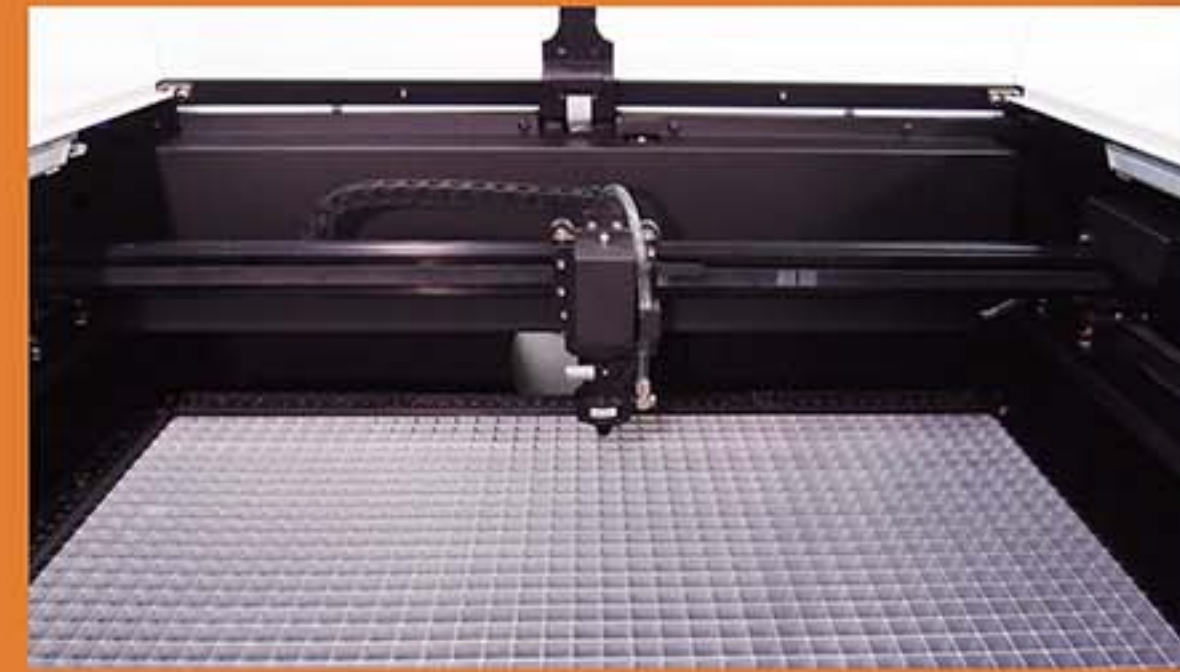
7" Large Touch Panel

With colorful intuitive 7" touchscreen interface, E200 desktop laser engraver can bring your inspiration to life.



Live Camera Preview

E200's on board camera allows you to preview your design to make positioning simple and easy.



High Throughput for Unlimited Imagination

20ips Processing speed with DC servo motor to boost productivity while maintaining precision.

Desktop Laser Engraver E200



Stamp Mode with Shoulder Level Function

E200 stamp mode with shoulder level function enables you to produce a professional stamp easily.



Free Bundle with GCC Materials to Start Your Business with Ease

Every E200 desktop laser engraver comes with free GCC Materials with barcode stickers. Camera can read the QR code and automatically set up the parameters according to different materials.

To purchase more laser materials, you are welcome to visit <https://gccwebshop.com>

