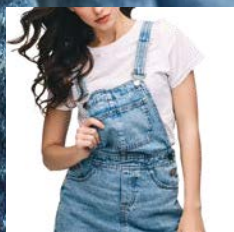


DENIM

Strong threads
for a strong fabric





'Denim is allowed to live and become damaged. But the seam must always hold. Our sewing threads are therefore highly robust.'

ROBUST SEAMS FOR DENIM

LOAD BEARERS

A pair of denim jeans consists of around 60 individual elements on average. Strong threads and robust seams are required to join all these elements into one durable pair of trousers. Apart from jeans, there is a huge variety of denim clothing such as denim shirts, jackets and skirts, to name only a few. The demands placed on sewing technology today are just as high: Top-stitched and decorative seams with very thick sewing threads are modern, fell seams which consist of up to 16 layers of sewing material on average, are completely normal. The appearance of the seams with heavy denim materials must be just as attractive as with thin or elastic materials.

The various finishing processes require seams and threads to be highly robust – they must be abrasion-resistant and colour-fast. The demands placed on sewing technologies are also extremely high: In automated sewing processes, the thread is guided at high speed through many layers of material. It must be able to withstand high loads. Missed stitches and torn seams can definitely be avoided by using the right sewing thread.



The durable cult trousers

The working trousers of cowboys and Californian gold diggers from the 19th century have long since become a modern piece of clothing. However, despite the variety of cuts and colours, a true pair of jeans must always fit perfectly. In the past, the robust cult trousers were only given an individual look after years of wearing. Today, jeans undergo a wide variety of finishing processes even before they are sold. They are washed, bleached and deliberately destroyed. Nevertheless, while the fabric can be damaged and the colour faded, the seam must always hold.

PRODUCT SOLUTIONS



PERMA CORE®

**FOR EXTREMELY
HEAVY-DUTY SEAMS**

Our highly tear- and abrasion resistant core spun thread made of 100% polyester: Perma Core® is suitable for extremely heavy-duty seams, making it a perfect choice for any denim application. This special sewing thread also withstands intensive finishing methods such as stone washing, is machine-safe and ideally suited for multi-directional sewing.



D-CORE®

FOR HEAVY-DUTY SEAMS

Its core, made of polyester, makes our D-Core® core spun thread extraordinarily tear-resistant. The cotton wrap gives this load-resistant thread a textile surface with excellent sewing properties and allows high sewing speeds and intensive finishing processes. For the perfect 'used look', the thread is also available in a special indigo dyeing.



PERMA SPUN®

**FOR NON
CRITICAL SEAMS**

The spun sewing thread has a high sewing performance on almost all sewing machines. It has been specially designed for non-critical seams such as serging in light and heavy fabrics and is distinctive for its good abrasion resistance. Perma Spun® is our economical solution made of 100% polyester for simple seam applications.



WILDCAT PLUS®

**FOR PLEASANT AND
COMFORTABLE WEARABILITY**

We have specifically developed this soft sewing thread for a pleasant wearing comfort. Wildcat Plus® has a very natural feel and is therefore ideal for seams which are in direct contact with the skin. In addition to its soft edge covering, it is colourfast and chemically resistant.

MACHINE-SAFE

**OPTIMAL
SEWABILITY**

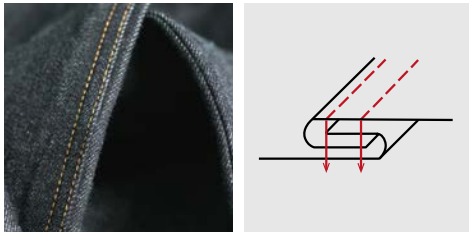
**TEAR- AND
ABRASION
RESISTANT**

**WIDE RANGE
OF COLOURS**

All benefits at a glance

SPECIAL THREADS FOR ANY LOAD

Denim must withstand a lot and so do the seams that hold everything together. Our premium sewing threads are specially developed for denim fabrics. They can cope with these high requirements and loads, but at the same time offer optimal sewability and are machine-safe. For more information, please visit: www.denim-threads.com



FELL AND CLOSING SEAMS

These very robust seams with double chain stitch often form the side and crotch seams as well as seat seams, dividing seams and saddle seams. The seams reach their limit at their intersection points due to the thickness of the sewing material, which often consists of up to 16 layers. This places a heavy burden on the needle and the sewing thread.



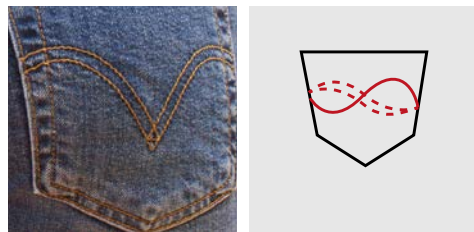
TOP-STITCHING

Pocket openings and trouser flies are often sewn using a double lockstitch. For a uniform look, the upper thread can be selected with the same thickness as the other lockstitch seams. A thread with a lower thread count can be used as the bobbin thread, so the seam is hardly noticeable.



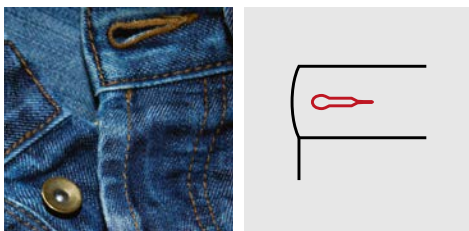
WAISTBANDS

Thick areas at the waistband must also be dealt with. The bar tacking of belt loops is a particular challenge for needle and thread. Many stitches are sewn close to each other at high speed, resulting in high frictional heat.



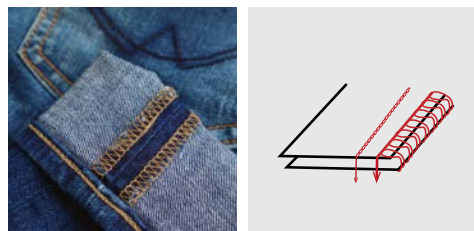
DECORATIVE SEAMS

Denim means diversity: different fabric thicknesses and washings to choose from, ensure a unique and distinctive look. Decorative seams are usually created by using the same sewing thread used for closing seams. For particularly raised seams, we also offer thicker counts.



BUTTONHOLES

Buttonholes are among the most difficult seams to repair. Often, it is even impossible. To avoid processing errors, the thread count, needle thickness, stitch density and the overstretch width of the zigzag stitch as well as the surface of the cutting area of the buttonhole should be harmonized exactly during production.



OVERLOCK SEAMS

Overlock seams prevent the cutting edges from fraying and often are in direct contact with the skin. Depending on the requirements, different sewing threads are used. Robust core spun threads made of 100% polyester are especially popular. For greater comfort and wearability, the rigid denim fabric is covered with textured threads.



SEAMS UNLIMITED

A SPECIALISED ALL-ROUNDER

The name Gütermann has stood for premium quality for over 150 years in the textile industry, that means perfect seams – through uniformity, a silky shine, a smooth texture, tear resistance and maximum flexibility. To offer our customers sustainable support, we also need to be flexible in how we approach the requirements of today's market and current fashion trends.

We continuously adapt our products to meet these requirements. We produce sewing thread products for the consumer, industry and automotive sectors which are precisely designed to meet the needs of our customers. They are carefully developed by our textile specialists so that they always have the same quality. When manufacturing processes reach their limits, we take things to the next level, we optimise our technologies and keep up with the latest developments in research. That's how innovation happens. And the quality promise of A&E Gütermann remains.

Your perfect seam starts with us. In the past, workers worked in isolation on their specific craft. In our plants in Germany and Slovenia, highly specialised textile technologists, engineers, chemists and dyers work together to ensure that all the details are coordinated.

Saving water in the textile industry

A&E Gütermann aims to reduce water consumption in all of its sites worldwide, many of our plants process wastewater into drinking water. In addition, a hydropower plant provides the water supply for all our production needs in Gutach im Breisgau.

A strong connection – Around the world

Since our merger as A&E Gütermann in 2014, we support your value chain worldwide. The smooth flow of materials and information minimizes your costs and creates transparency.



