

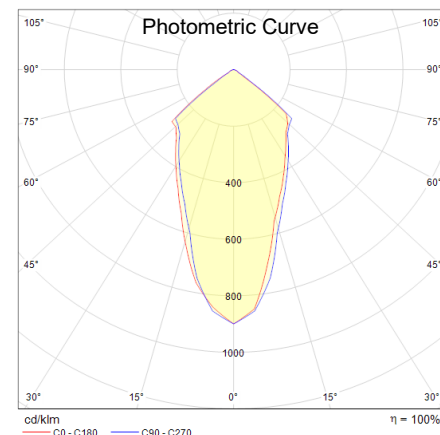
	mm	in
A Ø	86	3,39
B	50	1,97
C	700	27,56
D	80	3,15
E	63	2,48
F	102	4,02
G Ø	15	0,59



Euro Plug

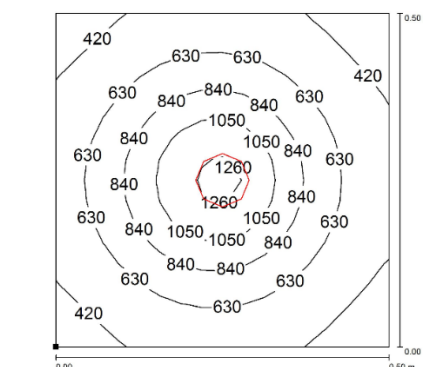
Mechanical Features		
Model	P996.70.N	P996.70.B
Casing Material	Aluminum	
Finishing	RAL 9005	RAL 7035
Side Closures	ABS	
Base	ABS	
Front Protection	Polycarbonate 0.12 in (3 mm)	
Arm	PVC covered flexible steel	
Protection Index	IP30 (compatible with NEMA 1)	
Operating Temperature	-04°F (-20°C) to +131°F (+ 55°C)	
Installation	Standard with M5 screws Metallic clamp cod. CLAMP.03 (ordered separately) Magnetic base cod. B01 (ordered separately)	
Weight	~ 2.65 lb (1.2 Kg)	

Wiring Diagram		
Pin	Wire	Connection
1	Brown	L
2	Blue	N



Electrical and Optical Features		
Model	P996.70.N	P996.70.B
Power Usage	4.5 W	
Power Supply	100 – 230 Vac	
Current	500 mA	
Electrical Connection	Cable PVC 2G 0.12 in ² (0.75 mm ²) flat L= 6.56 ft (2 m) with euro plug	
Switch	On/off	On/off
LED N° and Type	1 Multi Chip LED	
LED Lifetime	L70 **	
Light Color	5,000 K	
CRI	80	
Light Beam Angle	~ 120°	
Luminous Flux	500 lm	
Efficiency	~ 111 lm/W	

** The luminous flux output decreases less than 30% after 60,000 hours.



P996.70.x

Note: this surface is 0.5 m x 0.5 m
H= 0.3 m

Headquarter
CCEA. Srl
 Via Piave, 2
 36077 Altavilla Vicentina (VI) - Italy
 Tel. ++39 0444 572083
 Fax. ++39 0444 572337
 E-mail: ccea@ccealights.com
 Website: www.ccealights.com

US Office
CCEA Technical Lighting Corp.
 3802 N 54th Street, Suite B
 Mesa, AZ 85215
 Office: 1-623-526-9599
 Fax: 1-480-985-9663
 Email: sales@ccealights-usa.com
 Website: www.ccealights-usa.com



Part n° B01



Part n° CLAMP.03